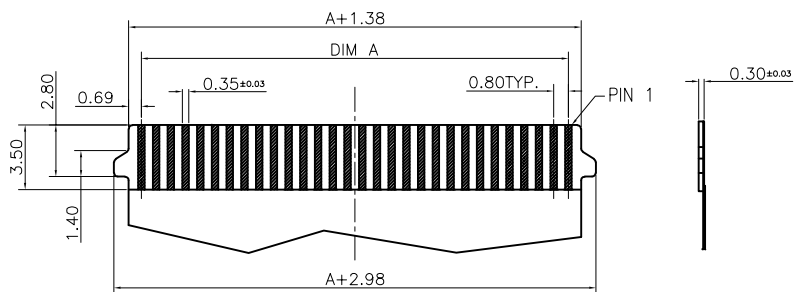
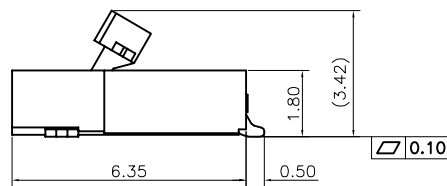
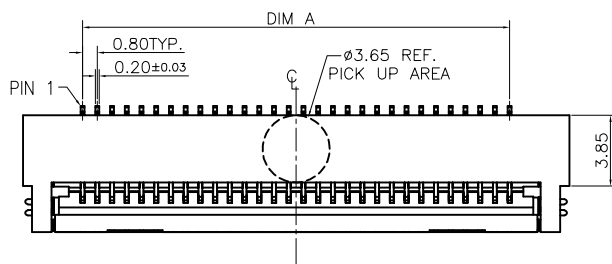


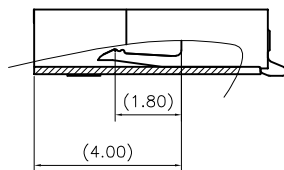
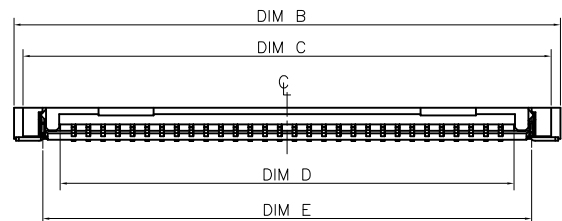
RECOMMENDED PCB LAYOUT
GENERAL TOLERANCE ±0.05



RECOMMENDED FPC/FFC DIMENSIONS
GENERAL TOLERANCE ±0.03



SCALE 6:1



SCALE 6:1

NOTES:

1. MATERIAL:
 - 1.1 HOUSING: THERMOPLASTIC, HIGH TEMP., UL94V-0. NATURAL, LCP
 - 1.2 ACTUATOR: THERMOPLASTIC, HIGH TEMP., UL94V-0. BLACK, LCP
 - 1.3 CONTACT: COPPER ALLOY
 - 1.4 FITTING NAIL: COPPER ALLOY
2. FINISH:
 - 2.1 CONTACT: 50µ" MIN. NICKEL UNDERPLATING OVERALL. 1:GOLD FLASH(0.5µ" MIN.).
 - 2.2 FITTING NAIL: 50µ"MIN. NICKEL UNDERPLATING OVERALL. 90µ"MIN. MATT TIN PLATING ON SOLDER TAILS(LEAD FREE).
3. REFLOW SOLDER CAPABLE TO 260°C PER ACES SPEC.
4. SPEC. PLS. REFER TO PS-51518-xxxx-xxx
5. PACKAGE PLS. REFER TO 51518-xxxx-TRP
6. PART NUMBER

52516-XXX X X-XXX

NO OF CKT	XXX	HOUSING COLOR	ACTUATOR COLOR
	001	NATURAL	BLACK
PACKING	PLATING		
	0: TAPE & REEL	1: GOLD FLASH	

CKT	DIM A	DIM B	DIM C	DIM D	DIM E
30	23.20	29.68	28.68	24.65	26.55

QUALITY SYMBOLS MAJOR Ⓢ CRITICAL Ⓢ GENERAL TOLERANCES (UNLESS SPECIFIED) X. ±0.5 .X ±0.25 .XX ±0.15 .XXX ±0.1 ANGLES ±2°	DRAWN BY	DATE	
	Xu.Bin	21/08/18	
	CHECKED BY	DATE	TITLE 0.8mm pitch Easy On FPC Conn. SMT R/A B/C Type
	Xu.Zhi Yong	21/08/18	
	APPROVED BY	DATE	UNITS
	Xu.Zhi Yong	21/08/18	mm
			SCALE
			1:1
			SHEET NO.
			1 OF 1
			SIZE
			A4
			SCALE
			1:1
			REV
			A
			RFO NO.
			N/A
			DWG NO.
			52516-XXXXX-XXX